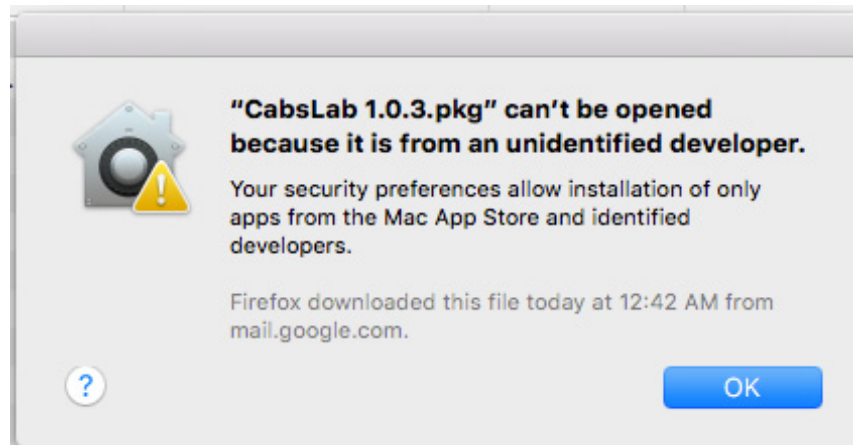
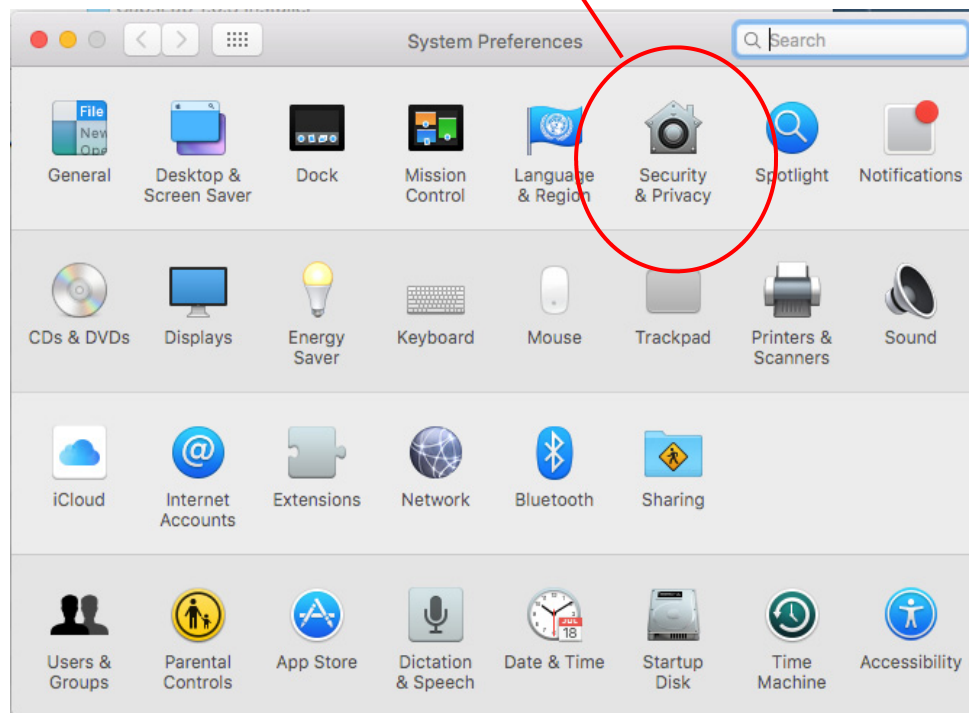


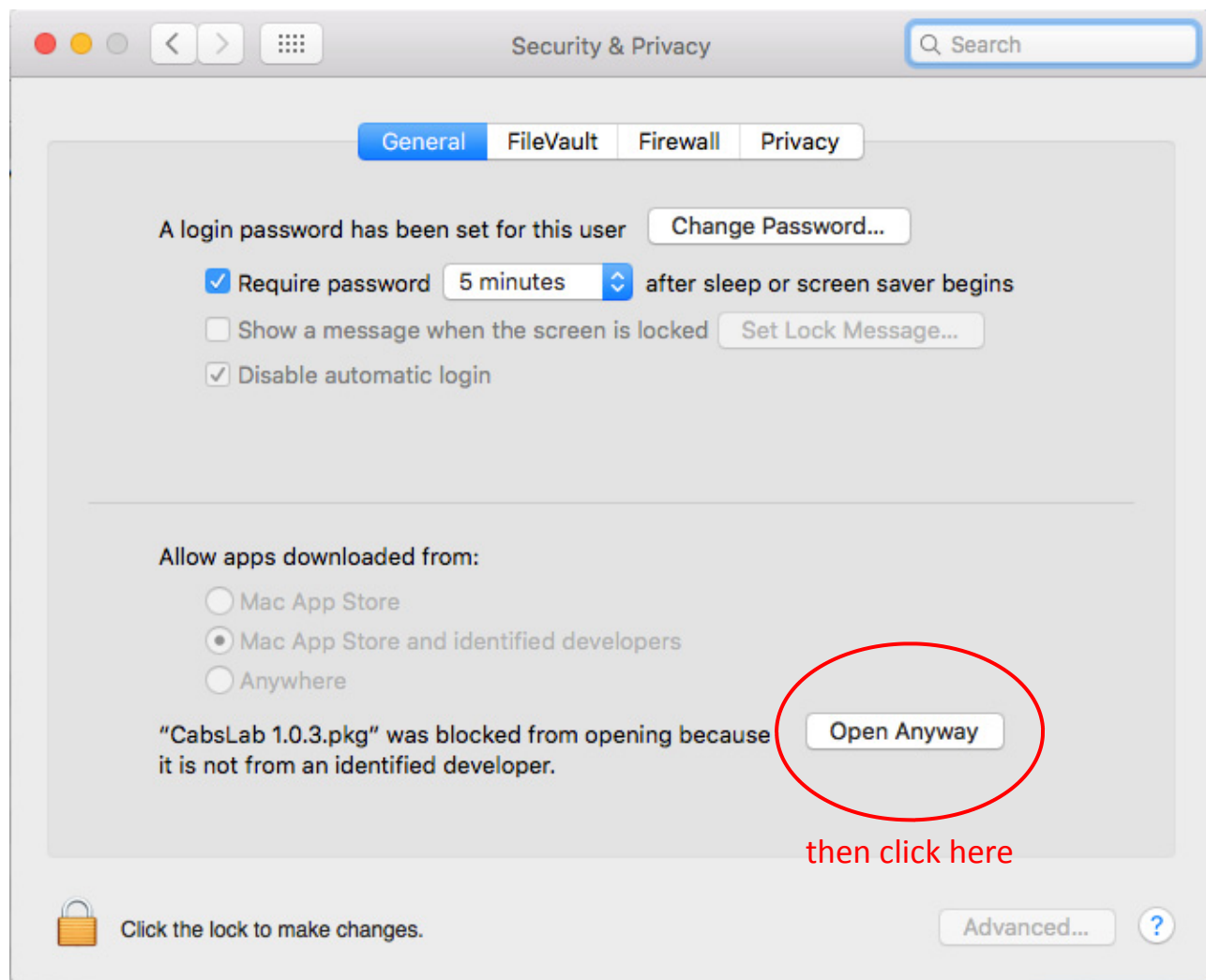
Troubleshooting

1. Can't open the software.



If you encounter an error message like the above when trying to open the app, open **System Preferences** in Finder, then click on **Security & Privacy**.





2. Pedal is not detected by software.

If this is the first time you are installing the software try restarting your mac, otherwise try connecting the pedal to a different USB port on your mac.

If problem persists, open the *Installation Read-Me* file and take a close look at STEP 2, then repeat the software installation process .